

舞 旋 梯

合奏：江维峰（三管AG）
赵方（双管SG）

作曲：曹登昌

1=G $\frac{4}{4}$

风雅三管AG陶笛（C调指法）

风雅双管SG陶笛（C调指法）

(前奏)

0 0 0 0 7 6 | 5 6 3 1 7 7 5 3 | 5 6 | 7 1 2 1 7 7 0 |

0 0 0 0 | 0 0 0 0 | 0 0 0 0 |

0 0 0 0 | 0 0 0 0 | 0 3 0 0 3 0 1 1 6 0 | 0 2 0 0 2 0 7 7 5 0 |

0 3 2 3 2 1 7 1 7 5 5 6 5 5 5 3 | 5 4 3 2 3 0 0 | 0 3 0 0 3 0 1 1 6 0 | 0 2 0 0 2 0 7 7 5 0 |

0 2 7 5 2 7 5 2 5 7 5 2 4 3 2 1 | 7 6 5 3 4 5 6 7 6 0 6 1 | 7 6 5 6 7 6 5 6 7 3 3 | 0 0 0 0 |

0 2 7 5 2 7 5 2 5 7 5 2 4 3 2 1 | 7 6 5 3 4 5 6 7 6 - | 0 0 0 0 | 7 6 5 6 7 6 5 6 7 3 3 |

7 6 5 6 7 6 5 6 7 3 2 7 | 1 7 6 7 1 7 6 7 1 3 0 | 0 0 0 0 |

0 0 0 0 | 0 0 0 0 0 6 | 7 6 5 6 7 6 5 6 7 3 3 |

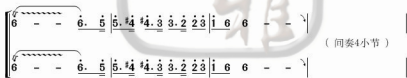
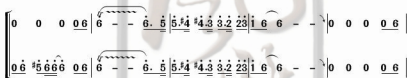
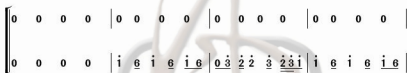
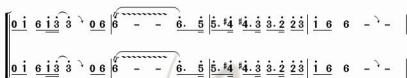
0 0 0 0 | 7 6 5 6 7 6 5 6 7 6 5 6 1 7 6 7 1 7 6 7 1 7 6 7 |

7 6 5 6 7 6 5 6 7 3 3 | 2 1 7 1 2 1 7 1 2 1 7 1 2 1 7 1 | 4 3 2 3 4 3 2 3 4 3 2 3 4 3 2 3 |

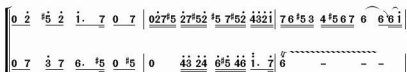
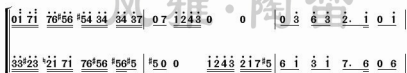
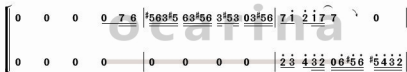
0 0 0 0 | 0 0 0 0 0 6 | 6 - - 6 . 5 | 5 . 4 4 . 3 3 . 2 2 3 | 1 6 6 - - |

0 0 0 0 | 0 0 0 0 0 6 | 6 - - 6 . 5 | 5 . 4 4 . 3 3 . 2 2 3 | 1 6 6 - - |

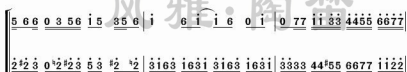
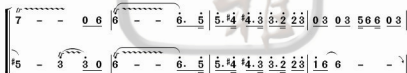
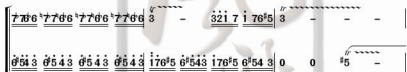
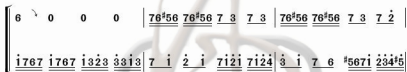
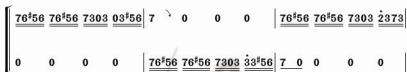
舞 旋 梯



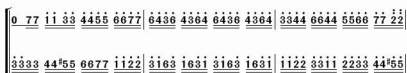
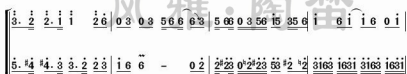
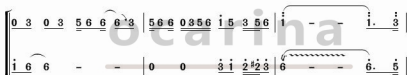
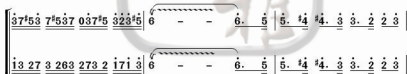
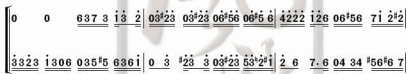
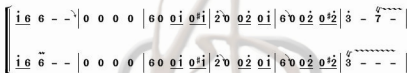
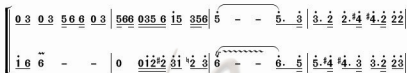
(间奏4小节)



舞 旋 梯



舞 旋 梯



舞 旋 梯

