

志

志

1=C $\frac{4}{4}$ 合奏：赵方(三管AC)
江维峰(三管AC)

风雅三管AC陶笛(C调指法)

作曲：曹登昌

(前奏)

0 0 0 0 | 0 0 0 0 | 0 0 0 0 |

3.3 5.5 3.3 $\flat 7.\flat 7$ | 3.3 5.5 3.3 $\flat 7.\flat 7$ | 3.3 5.5 3.3 $\flat 7.\flat 7$ |

0 0 0 0 | $\flat 7.\flat 7$ $\flat 7.\flat 7$ $\flat 7.\flat 7$ $\sharp 1.\sharp 1$ | $\flat 7.\flat 7$ $\flat 7.\flat 7$ $\flat 7.\flat 7$ $\sharp 2.\sharp 2$ | $\flat 7.\flat 7$ $\flat 7.\flat 7$ $\flat 7.\flat 7$ $\sharp 1.\sharp 1$ |

6.6 $\flat 7.\flat 7$ 5.5 2. $\flat 3$ | 3.3 5.5 3.3 $\flat 7.\flat 7$ | 3.3 5.5 3.3 $\flat 7.\flat 7$ | 3.3 5.5 3.3 $\flat 7.\flat 7$ |

6.6 $\flat 7.\flat 7$ 5.5 2.2 $\sharp 2$ | 3.3 3.3 $\flat 3.7$ 3.3 2 7 | 1.5 1 7 5 7 $\flat 7$ $\sharp 4$ | 3.3 3.3 $\sharp 4.4$ $\sharp 4.4$ $\sharp 4.5$ 6.6 |

6.6 $\flat 7.\flat 7$ 5.5 2.2 $\flat 3$ | 3 0 0 0 | 0 0 0 0 | 0 0 0 0 |

7 6 7 1 7 1 7 0 | 0 0 0 0 | 0 0 0 0 | 6.6 1.1 5.5 3.3 |

0 0 0 0 | 3.3 3.3 $\sharp 4.\flat 3$ $\sharp 4$ 5 7 | 1.7 6 5 $\sharp 4$ 3 $\flat 3$ 7 | 1.1 3.3 7.7 5.5 |

$\sharp 4.\flat 3$ 7 1 7 $\flat 3$ 0 | 6.4 2 6.7 1 7 6 5 $\sharp 4$ 5 2 | 2.2 1.1 $\flat 7.\flat 7$ 6.6 | $\flat 7.\flat 7$ $\sharp 1$ 4 3 4 4 $\sharp 1$ |

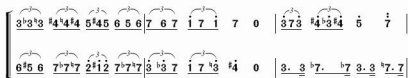
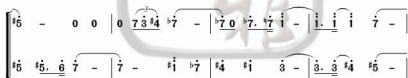
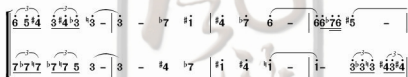
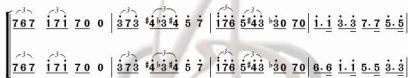
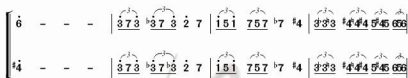
6.5 $\sharp 4$ 3 $\sharp 4$ 3 $\flat 3$ 0 | 2 0 $\sharp 4$ 0 6 0 $\sharp 4$ 0 | $\flat 7.\flat 7$ 6.6 5.5 $\sharp 4.2$ | $\flat 3$ 0 $\sharp 1$ 0 $\flat 7$ 0 |

$\flat 3$ 3 $\flat 7$ 6 7 1 7 1 $\sharp 4$ | 6.4 6.4 6.4 6.4 | 2.3 2 1 2 1 $\flat 7$ 6.5 | 6. $\flat 7$ 6 $\sharp 4$ 5 |

6 1 3 4 4 5 6 6 6 | $\sharp 4$ 1 $\sharp 4$ 1 $\sharp 4$ 2 $\sharp 4$ 2 | $\flat 7$ 1 $\flat 7$ 6 7 6 5 $\sharp 4$ 2 | $\sharp 4$ 5 $\sharp 4$ 2 3 |

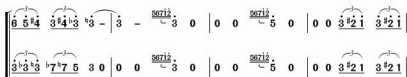
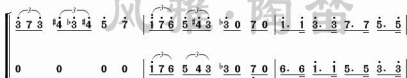
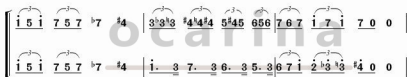
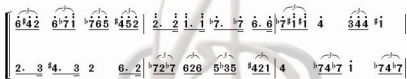
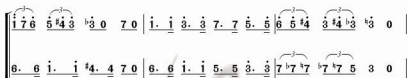
志

志



志

志



志

志

